

Samsung Pay Customer Experience

Additional support can be found at:

<http://www.samsung.com/us/support/owners/app/samsung-pay>

Samsung Pay simulator:

<https://publish.samsungsimulator.com/simulator/ecaa4293-95a2-4063-a104-462815ac515d/>


Document Contents

[Download and Install Samsung Pay](#)

[Set-Up Samsung Pay](#)

[Add a Payment Card in Samsung Pay](#)



Supported Carriers:

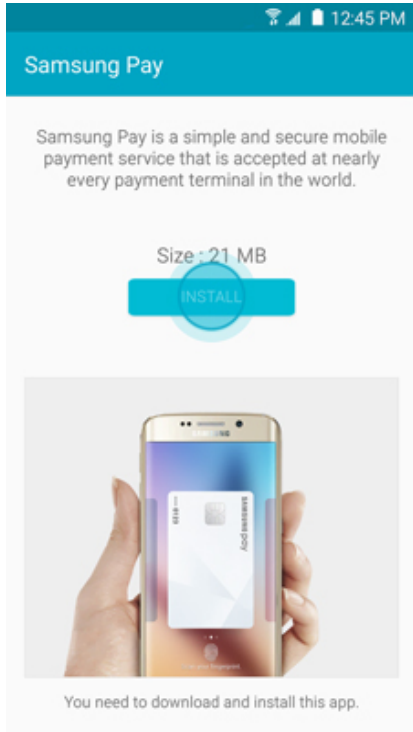
		
		
		

Supported Devices:

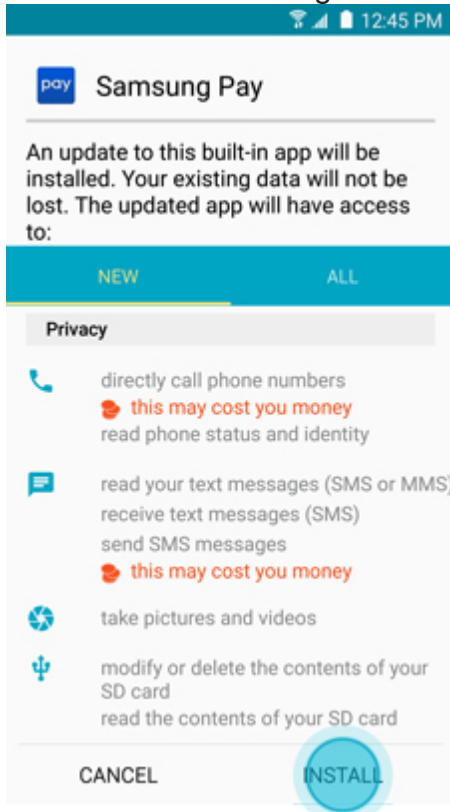
Galaxy S7	Galaxy S7 edge	Galaxy S6
Galaxy S6 edge+	Galaxy S6 active	Galaxy S6 edge
	Galaxy Note5	

Download and Install Samsung Pay

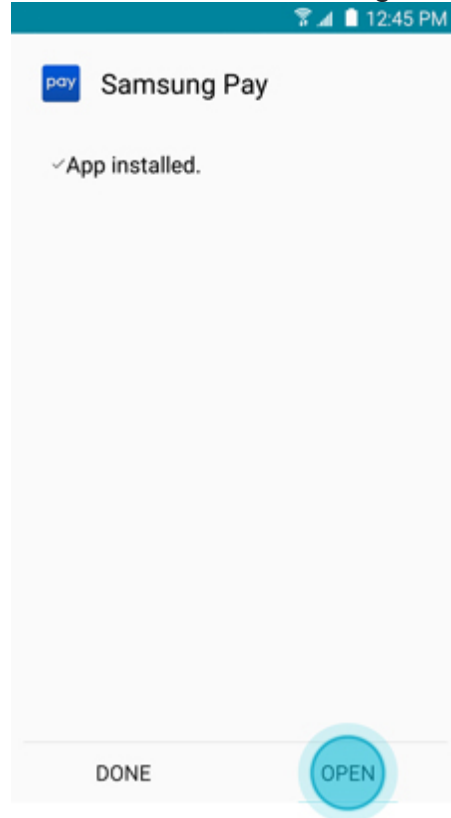
1. From the Home screen, touch Apps .
2. Touch Samsung Pay .
3. Touch INSTALL to download the necessary files.





4. Touch INSTALL to begin the installation.



5. Touch OPEN to start using Samsung Pay.



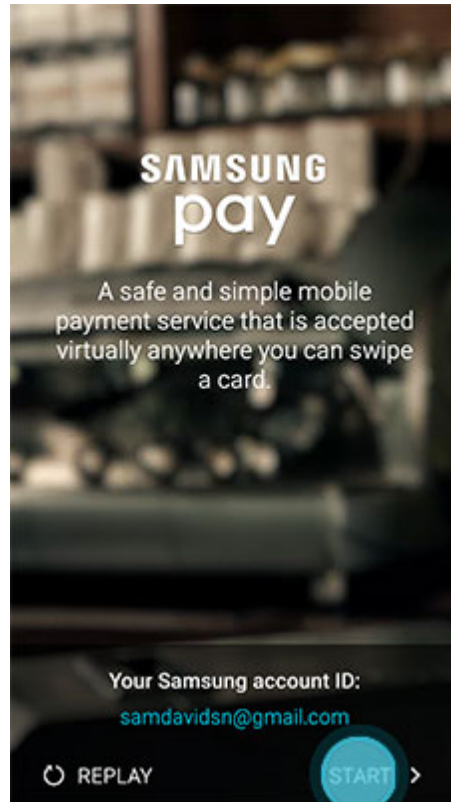
Set-Up Samsung Pay

1. From the Home screen, touch Apps .
2. Touch Samsung Pay .
3. The first time you open Samsung Pay, a short introduction video will play.



Note: Touch SKIP to bypass the introduction and continue the setup process.

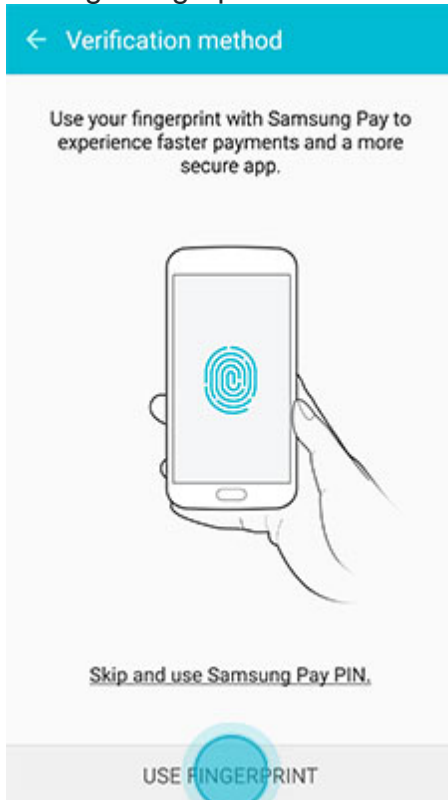
4. Your Samsung account will be automatically linked to Samsung Pay. Touch START to continue.



Note: If you have yet to sign in to your account, touch SIGN IN and enter your email address and password information. If you do not have an account, you can [create a Samsung account on your device](#).

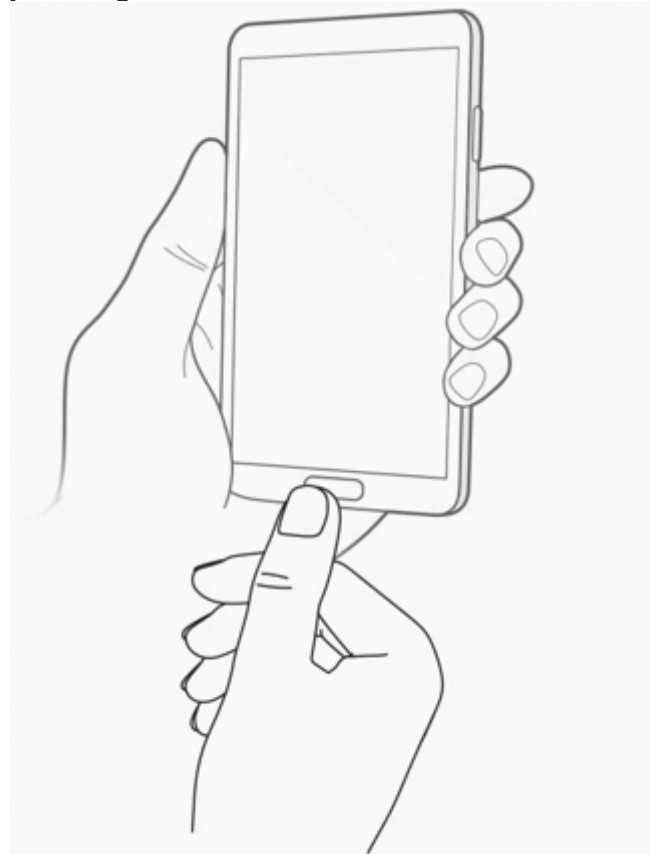
Set-Up Samsung Pay

5. Touch USE FINGERPRINT to assign your fingerprint as the verification method. If you have not registered your fingerprint on the device, you will be given the chance to add a fingerprint. We will walk you through adding a fingerprint for the first time.



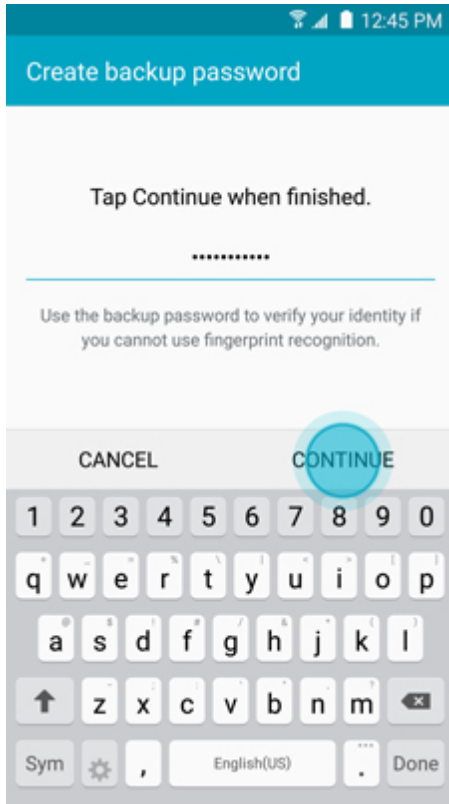
Note: You can also assign a four-digit Samsung Pay PIN code instead of using your fingerprint. Touch Skip and use Samsung Pay PIN.

6. Place your finger on the Home key, and then lift it off once you feel a vibration. Repeat until you have reached 100%. To ensure your whole fingerprint is recorded, move your finger slightly each time you touch the key, fully covering the key with your finger.

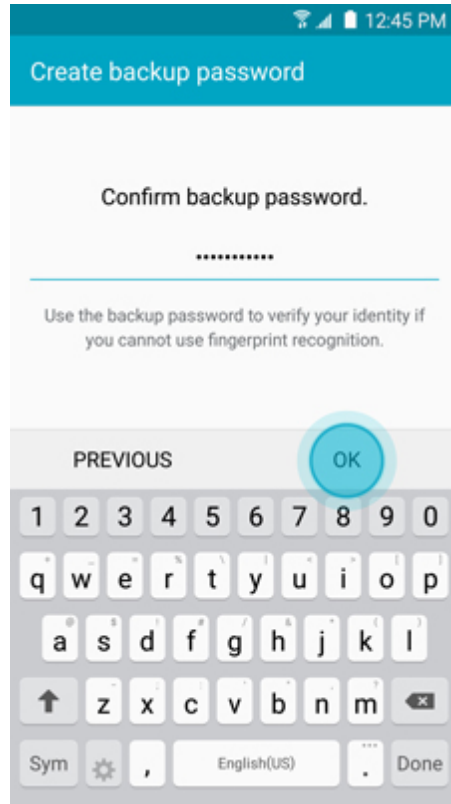


Set-Up Samsung Pay

7. Create a backup password and touch CONTINUE.

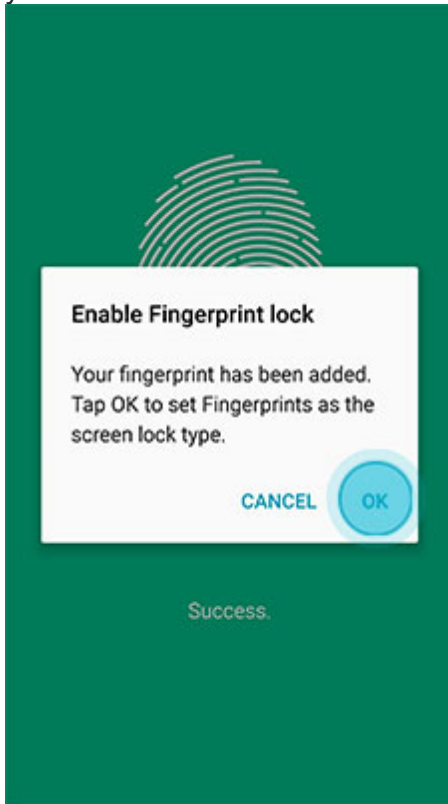


8. Retype the password to confirm it and touch OK.

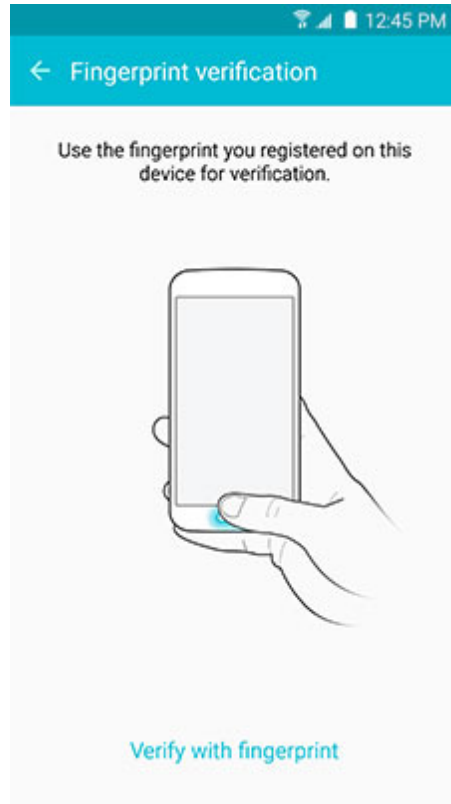


Set-Up Samsung Pay

9. Touch OK to use your fingerprint to unlock your device.





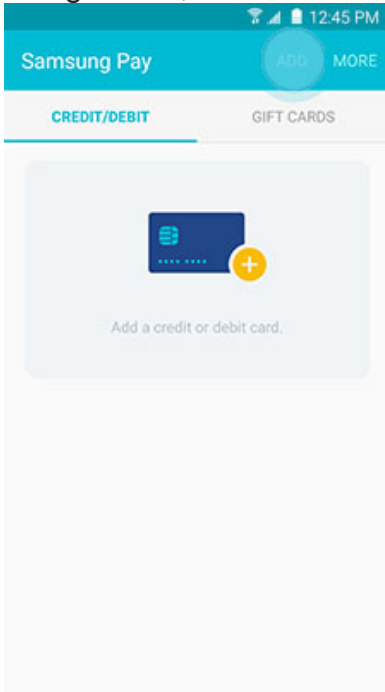
10. Scan the fingerprint you just registered for verification.



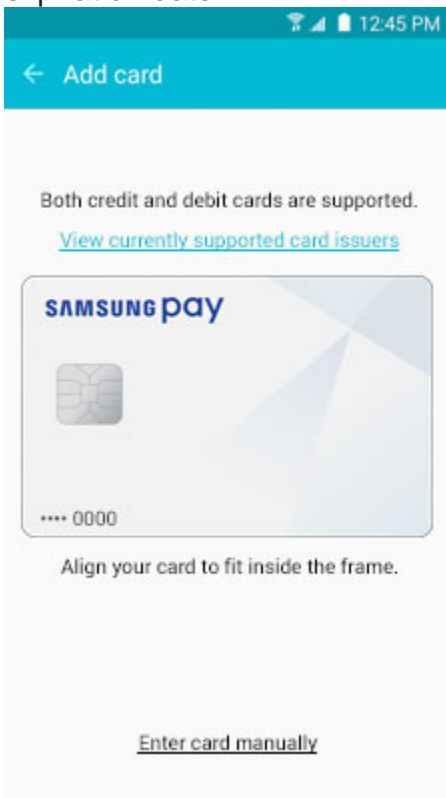
11. Create a Samsung Pay PIN for payment authentication and application protection.
12. Re-enter the PIN to confirm.
13. You are now ready to add your payment cards and use Samsung Pay.

Add a Payment Card in Samsung Pay

1. From the Home screen, touch Apps .
2. Touch Samsung Pay .
3. Touch ADD or, if this is the first payment card being added, touch Add a credit or debit card.



4. Align your card inside the frame to automatically detect the card number and expiration date.



- Note: Touch Enter card manually if your device cannot detect the card information.
5. Enter the remaining information and touch NEXT.

Card number
4001 2345 6789 0000

Cardholder name
Enter the name as it appears on your card.
SAM DAVIDSON 52/64

Expiration date
02 / 19

Security code (CVC/CVV)
*** ?

Postal/ZIP code
75238

For card registration and fraud prevention purposes, information about your card, device, account, and/or location may be sent to your card networks or issuers when you add cards or use Samsung Pay.

[About Samsung Pay Privacy Notice](#)

NEXT >

Add a Payment Card in Samsung Pay

6. If requested, enter your billing address and touch SAVE.

Billing address
123 Main Street

Address line 2

New York

NY

10007

SAVE >

7. Review the terms and conditions, and then touch AGREE TO ALL.

8. If necessary, select a method to authenticate your identity using a [one-time password \(OTP\)](#).

Verify card

Select one of the following options to verify your card.

Samsung
**** 0000

SMS

Email

CALL BANK

LATER

SUBMIT

9. Enter the OTP and touch SUBMIT.

Enter code

A verification code has been sent to your device (***-***-1124). Enter the code below.

203570

CANCEL

SUBMIT

Add a Payment Card In Samsung Pay

10. Touch DONE to complete the process.



11. After your card is added to Samsung Pay, it will be verified by the payment card network (i.e., Visa, MasterCard, or American Express) and the card issuer (e.g., Bank of America, Citibank, or U.S. Bank). On average,

verification will take approximately 5 to 10 minutes. During that time, you will be unable to use your card in Samsung Pay.

Note: You can continue to add cards while others are being verified.

12. After the card is verified, it can be used immediately to make a purchase.

